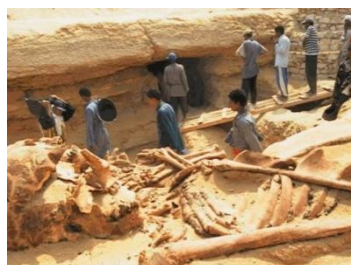


Archeological findings and skeletons in large numbers have been excavated in Romania, Middle East, India, U.S., Greece, and on every continent. However they 'miraculously' disappear as quickly as they're unearthed and are promptly with the utmost secrecy taken away for 'further research'. While the excavation areas are declared no fly zone, and people are told in no uncertain terms to hush it up.



These finds quickly disappear off the radar and the photographs are declared 'photoshopped hoaxes'



GIANTS in the NEWS

GIANT SKELETON FOUND UPON ARIZONA RANCH
PRESCOTT, Ariz.' Aug. 5.—The

The Cardiff Giant Outdone—Alleged Discovery of the Skeleton of a Giant in the Oil Regions.

The Oil City Times of Friday is responsible for the following:
On Tuesday morning last, while Mr. Wm. Thompson.

The New York Times
Published October 23, 1892

A Race of Giants in Old Gaul.

From the London Globe.

In the year 1810 some human bones of enormous size, double the ordinary in fact, were found in the tumulus of Castelnaud, (Hérault.)

The New York Times
Published: May 25, 1882

THE BONES OF A GIANT FOUND.
ST. PAUL, Minn., May 24.—A skull of heroic size and singular formation has been discovered

This May 25, 1882 article ends with:

'.. evidently a giant. A thorough investigation of the mound and its contents will be made by the **Historical Society.**'



Smithsonian

The **Historical Society** is the **SMITHSONIAN INSTITUTE**, founded in 1848, administered by the U.S. Gov't, which has affiliates and centres worldwide to **promote the evolution theory.**

The AIAA (American Institution of Alternative Archeology) states that a **U.S. Supreme Court ruling** has forced the Smithsonian Institution to release classified papers in 2015, dating **from the early 1900's**, which show that **thousands of giant human remains were ordered destroyed** by high level administrators.

The Smithsonian had sued the AIAA for defamation. A turning point of the court case was when a 1.3 meter long human femur bone, was shown as evidence in court by Smithsonian whistle-blowers.*

There is always the possibility that:

"someone has a few skeletons in his cupboard."

NATURAL ADAPTATIONS versus MUTATIONS

After the flood, animals started adapting in colour and size according to the drastic climate changes and survival needs. These are the **Natural Adaptions**, often confused with Mutations and Natural Selection.

In evolution we learn that, 'Mutations are material on which evolution acts.. **Mutations** can be caused by random **errors in DNA** replication or repair, or by **Chemical or Radiation damage**. Most times these are either harmful or neutral, but in rare instances, a mutation might prove beneficial to the organism..' The bad ones died out because of **Natural Selection**, which is the survival of the fittest.

The theory that through mutations, dogs can develop into horses, tigers can change into rats and frogs into birds, is an amazing fantasy world - but not science!



The definition for science is:

to discover **FACTS** . . to formulate laws and principles based on these **FACTS** . . that can be **verified or tested by further investigation.** *

Chemical and Radiation Mutations Facts

Some may remember the dire photos of thalidomide **Chemical Mutations of the Softenon babies** in the 1970's.*

And recently how **harmful Radiation Mutations** have been for babies born in Middle East warzones. Radiation of DU, Depleted Uranium, used in bombs, causing ghastly birth defects.* Babies without arms, no legs, one eye, open insides, double heads, horrific deformities, that shake a person's inner being to the core. **Not one mutation proved beneficial.**

If it was rare to have beneficial mutations and there were thousands, then the Earth should be filled with quadrillions of fossils with harmful or neutral mutations. We are taught that, 'fossils are one of the central lines for evolution evidence.'*

Where are they?

HOAXES

The Piltdown man was publicized in 1912. It was constructed by using the jawbone of an orangutan, soaked in potassium, so it would look like a fossil. *



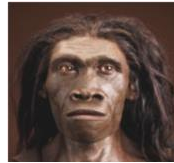
The Piltdown Man was taught in our schools for 40 long years and confused the young minds of a whole generation in their studies.

These next ones remain in our school textbooks.

The Homo Heidelbergensis



The Heidelberg man was constructed by the inspiration of a jawbone that was considered by many to be quite human. However, he is another missing link in the tree of evolution.



The Homo Erectus

Have you ever wondered what body part was used to construct the Homo Erectus?

@ 1.89 million - 143,000 years ago.

The Homo Neanderthalensis

Dr. A. J. E. Cave explained in 1958, at the Congress of Zoology that the Neanderthal Man was the skeleton of an older gentleman who had suffered from arthritis.* He is supposedly our closest human relative.



@ 400,000 - 40,000 yrs ago.



Reconstructions are by **John Gurche**

The Homo Sapiens

That is the human race and we allegedly developed around 40,000 years ago.

(Don't miss the pamphlet: "The Big Bang - Earth's Age and Population")

If evolution is true then why can't we find complete skeletons of the missing links, as we do of the giants?



Adolf Hitler wrote in Mein Kampf: 'It would never come into the heads of the broad masses to fabricate colossal untruths, and they would not believe that others could have the impudence to distort the truth so infamously.'*

LUCY - the missing link

I quote, 'Scientists have discovered a remarkably complete skeleton of a 3-year-old female from the ape-man species represented by 'Lucy'.. The remains are 3.3 million years old . . . Judging by how well it was preserved, the skeleton may have come from a **body that was quickly buried by sediment in a flood**, the researchers said.' *

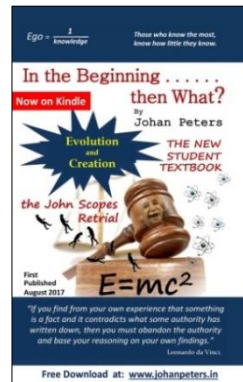


'Recently however, it has been revealed that Lucy (Australopithecus Afarensis) had an anatomy ideally suited to climbing trees and was **no different from other apes..**

The French scientific journal '**Science et Vie**' covered the story in 1999 under the headline "Adieu, Lucy".

Tel Aviv University anthropologists determined that Lucy's lower jaw bone is some kind of gorilla jaw bone. . . As a result, the evolutionary researchers concluded that **'Lucy should no longer be considered man's direct ancestor.'** *

Lucy remains in the university libraries and remains a vital part of the big evolutionary exhibitions to promote 'science'. *



* This referenced material is taken from 'In the Beginning... then What?' by Johan Peters.

A fiery court-case in which both evolution and creation are presented.

One critic referred to it as "The book of the century."

100% virus free. Link: [ansemplates\(johanpeters.in\)](http://ansemplates(johanpeters.in))

Several websites are trying to sell my books, but if you visit my site <https://johanpeters.in> then all downloads, books and pamphlets are **100% FREE DOWNLOADS** with no strings attached.

Contact:

Giants, Mutations and Hoaxes!



The above skeletons came to light after heavy rainfalls in Mexico, on March 23rd, 2015, in Sierra Tapalpa. This was not photoshopped as some claim, seeing it was printed in several news media, e.g., 'Mendoza Post' * and 'LaCalla'.*

We are taught in school that our ancestors were smaller in stature. The following photographs are excavations from all over the earth and tell us a different story.

"There were giants in the earth in those days;"

(Genesis 6:4)

Was this true or just fairy tale fodder?